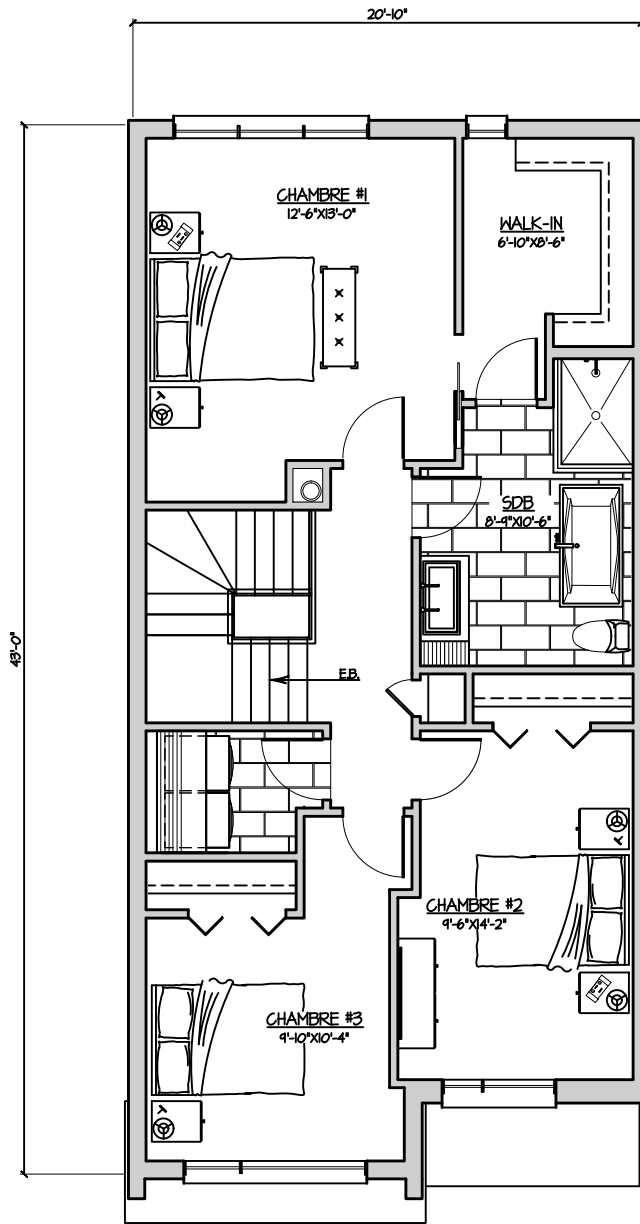


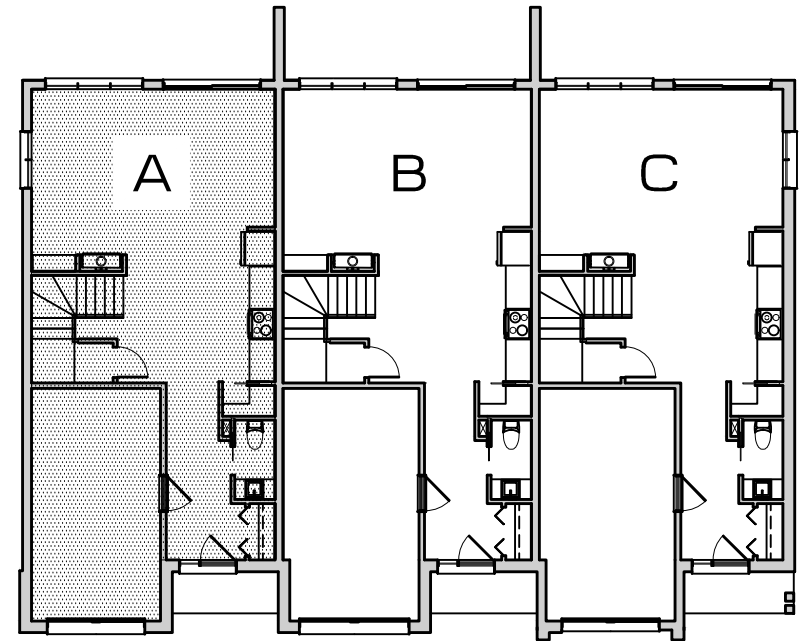
REZ-DE-CHAUSSÉE LOGEMENT A

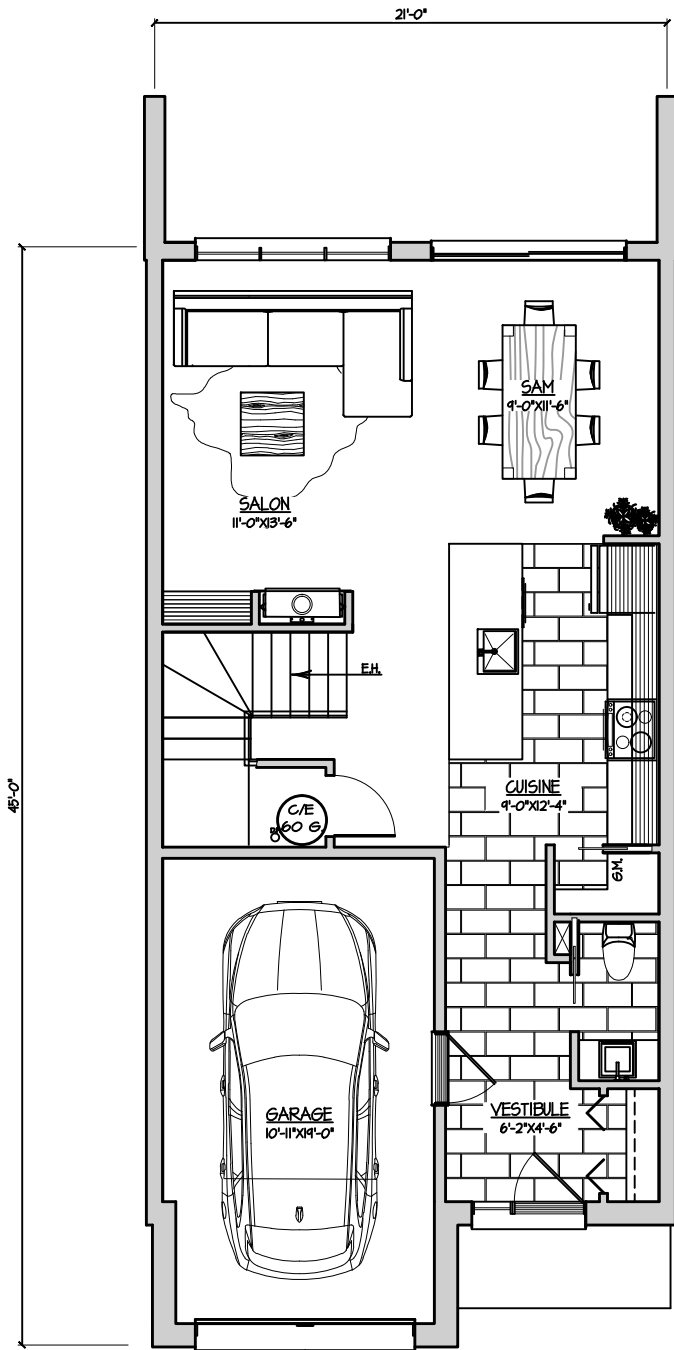
SUPERFICIE BATIMENT: 894 P.I.C.A.



ÉTAGE LOGEMENT A

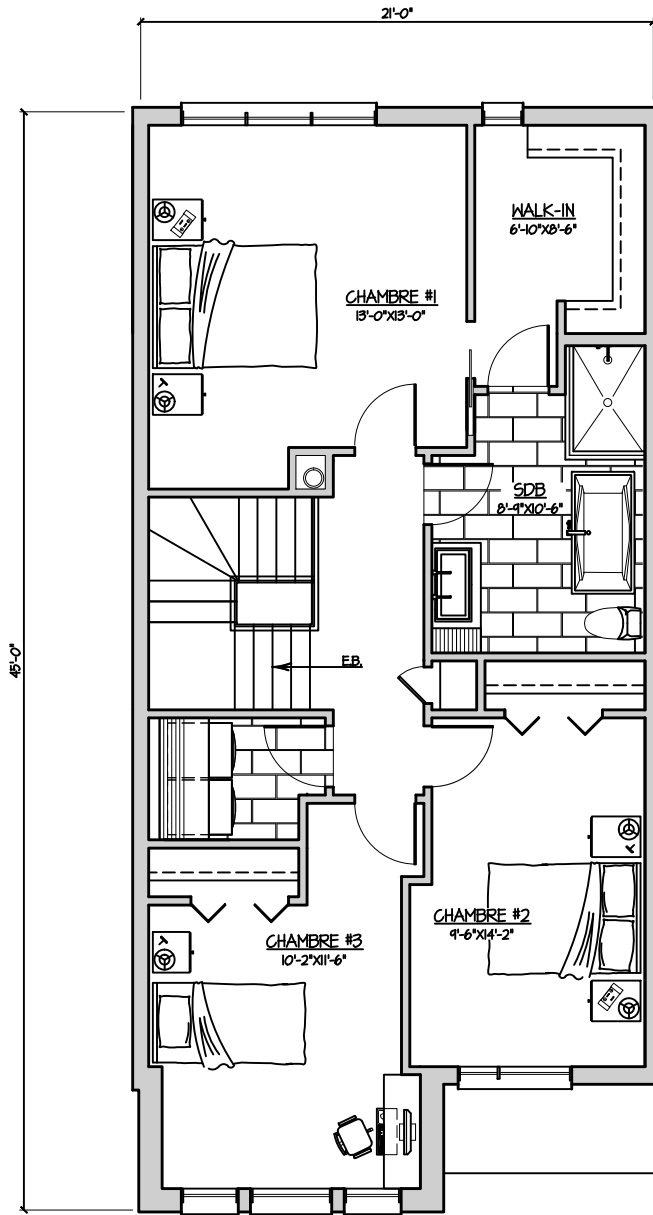
SUPERFICIE BATIMENT: 888 P.I.C.A.





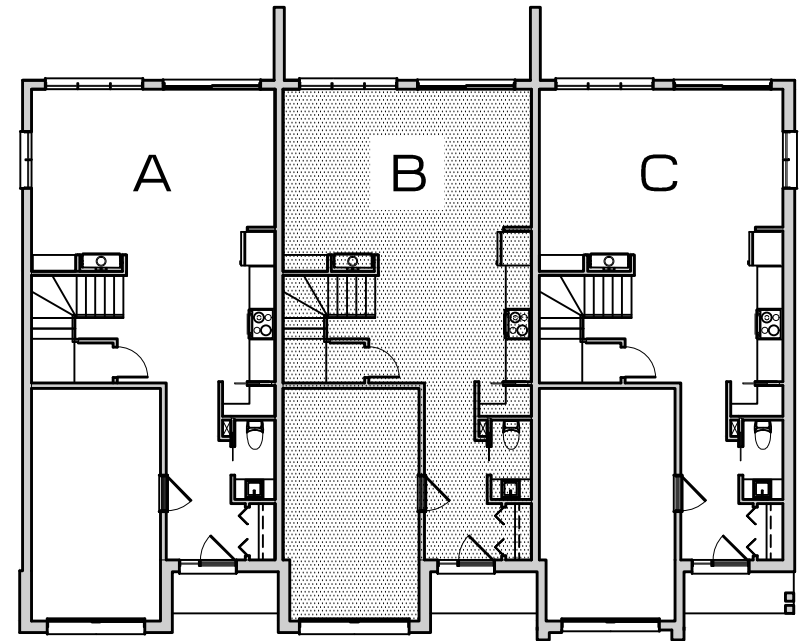
REZ-DE-CHAUSSÉE LOGEMENT B

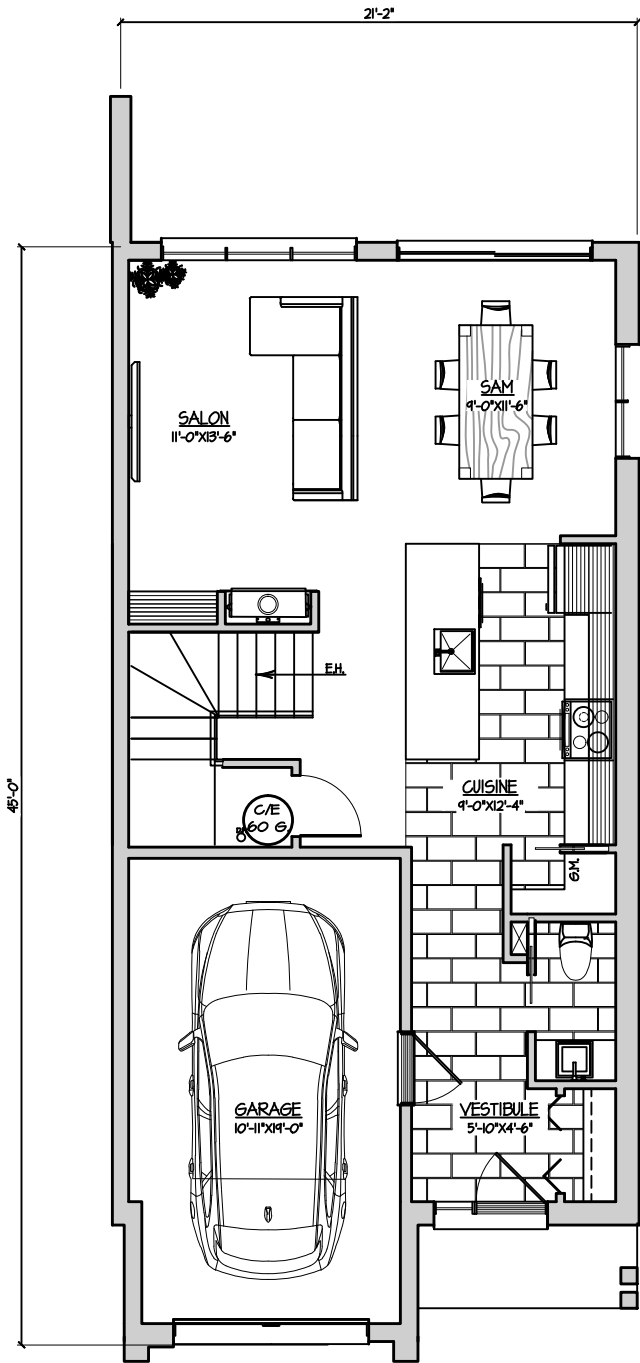
SUPERFICIE BATIMENT: 902 PL.CA.



ÉTAGE LOGEMENT B

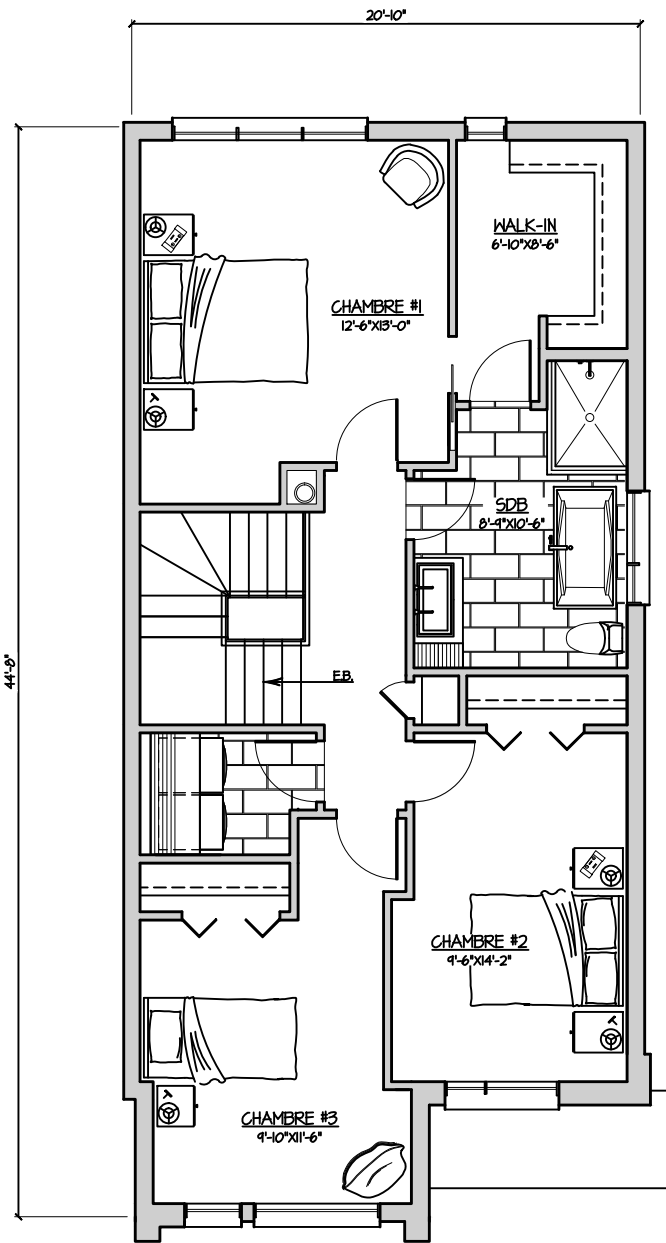
SUPERFICIE BATIMENT: 899 PL.CA.





REZ-DE-CHAUSSÉE LOGEMENT C

SUPERFICIE BATIMENT: 901 P.L.C.A.



ÉTAGE LOGEMENT C

SUPERFICIE BATIMENT: 888 P.L.C.A.

